

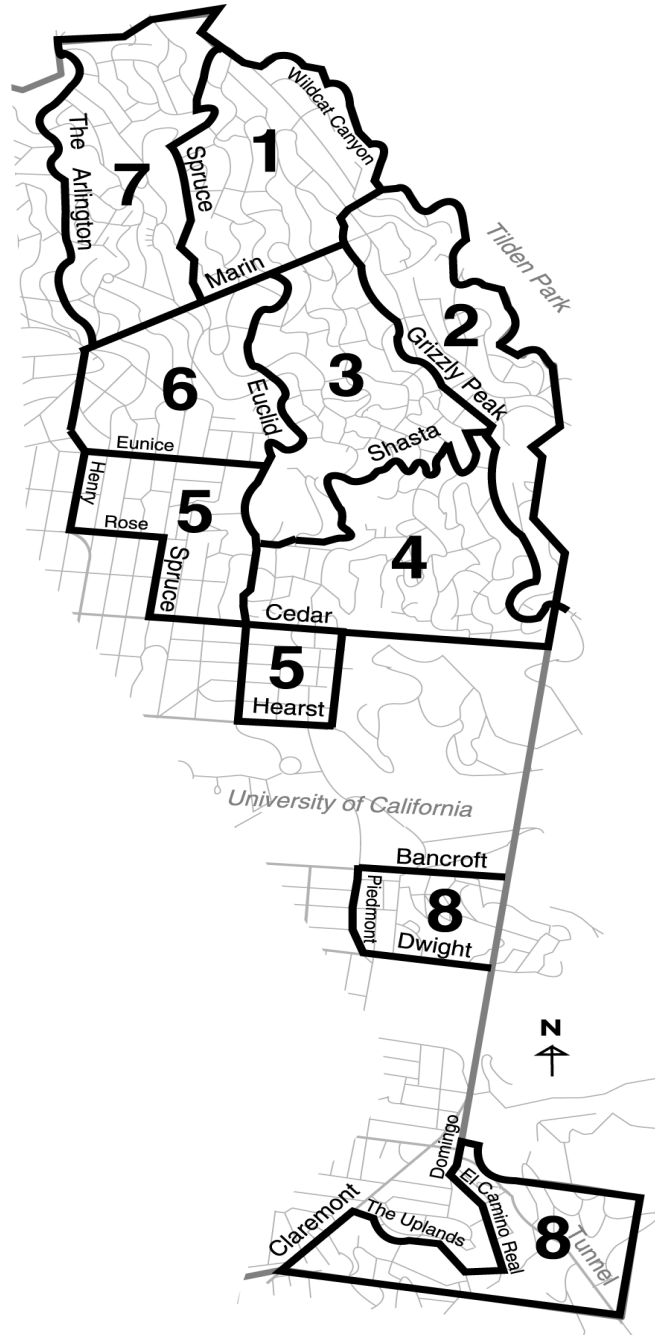
## 2009 Chipper Schedule

City crews will make two passes through each neighborhood chipping branches to collect vegetation placed on the side of the roadway. Please refer to the table and map below for the scheduled chipper/pickup dates for your area.

Area	Pass / Dates	Borders
1	(1) June 8 – June 12 (2) Aug 3 – Aug 7	Spruce, Marin, Grizzly Peak & Sunset to the City Limits.
2	(1) June 15 – June 19 (2) Aug 10 – Aug 14	Sunset Lane & Grizzly Peak to the City Limits.
3	(1) June 22 – June 26 (2) Aug 17 – Aug 21	Marin, Euclid, Rose, Shasta and Grizzly Peak Blvd.
4	(1) June 29 – July 3 (2) Aug 24 – Aug 28	Shasta, Rose, Euclid, Cedar, UC campus & Grizzly Peak Blvd.
5	(1) July 6 – July 10 (2) Aug 31 – Sept 4	Eunice, Henry, Rose, Spruce, Cedar, and Euclid. Cedar, Euclid, Hearst & UC campus.
6	(1) July 13 – July 17 (2) Sept 7 – Sept 11	Marin, Sutter, Eunice & Euclid.
7	(1) July 20 – July 24 (2) Sept 14 – Sept 18	Arlington, Marin, & Spruce to City Limits.
8	(1) July 27 – July 31 (2) Sept 21 – Sept 25	Domingo, El Camino Real, The Uplands, Claremont Ave to the City Limits. Dwight to Bancroft & Piedmont to the City Limits.

## 2009 Fire Fuel Chipper & Debris Bin Program

This year's Fire Fuel Chipper and Debris Bin Program will begin on **Monday, June 8, 2009** and end on **Friday, September 25, 2009**.



City of Berkeley  
 Parks Recreation & Waterfront Department  
 Parks Division - Forestry Unit  
 1325 Bancroft Way  
 Berkeley, California 94702



Parks Recreation  
 & Waterfront Department

## 2009 Fire Fuel Chipper and Debris Bin Program

This notice is printed on recycled paper

## INSTRUCTIONS FOR BAGGING VEGETATION

1. **Free biodegradable bags** (ten per residence, please) may be picked up at the following four City of Berkeley Fire Stations from 8 A.M. to 5:00 P.M., every day of the week and from the Parks Field Office at the City's Corporation Yard, Monday through Friday from 7:00 AM to 3:00 PM.

**Station #2 - 2029 Berkeley Way**

**Station #3 - 2710 Russell Street**

**Station #4 - 1900 Marin Avenue**

**Station #7 - 2931 Shasta Road**

**Parks Field Office - 1325 Bancroft Way**

2. Loose vegetation must be put in paper or biodegradable bags and weigh less than 25 lbs.

### Important:

- Only use the free WHITE biodegradable bags!
- Bag **ALL** Poison Oak.
- **DO NOT** include: soil, rocks, concrete, garbage.
- Black plastic bags will **NOT** be picked up.

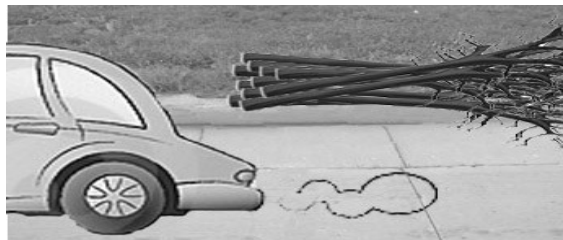


## INSTRUCTIONS FOR STACKING VEGETATION

1. **Have all vegetation ready no later than Monday morning** of your scheduled week for pick-up any time during that week. Place all vegetation as close to the street as possible. Please do not block fire hydrants. Avoid parking directly in front of the piles whenever possible.

2. **Make sure all brush set out for chipping is free of metal objects** such as nails, spikes, or fencing materials. Metal objects run through a brush chipper could seriously injure the chipper operator and will damage the chipper.

3. **Branches for chipping must be less than 5 inches in diameter** and may be of any length. (Keep piles less than 4 feet high.) Please stack branches neatly, with all cut ends facing in the same direction as vehicle traffic would travel.



## INSTRUCTIONS FOR PILING LOOSE VEGETATION

1. **Keep ivy separated from other vegetation.** Break apart piles of ivy or other vines and stack loosely (unbagged) in a separate pile.
2. **Keep bamboo separated from other vegetation.** Stack bamboo shoots in a separate pile to be picked up separately.
3. If you have any questions, please call the Finance Customer Service Office at **981-7270** between 8:00 A.M. and 5:00 P.M. or e-mail us at [trees@ci.berkeley.ca.us](mailto:trees@ci.berkeley.ca.us)

## DEBRIS BIN PROGRAM

Your regular curbside plant debris pickup will also operate on your scheduled trash pickup day. If you have extra plant debris material for the regular every-week curbside pickup, you may use brown pre-paid bags or tags. The free bags for the Fire Fuel Chipper Program **cannot** be used in the regular curbside plant debris program. Call **981-7270** or go to <http://www.ci.berkeley.ca.us/ContentDisplay.aspx?id=5606> for information.

1. To reserve a debris bin, call the Finance Customer Service Office at **981-7270** between 8:00 A.M. and 5:00 P.M. Please be prepared with alternative dates, to permit effective scheduling.

2. Debris bins hold 30 cubic yards and will be available for drop-off on Tuesday and Friday. Bins left by 5:00 PM on Tuesday will be picked up by Noon on Friday. Bins left by 5:00 PM on Friday will be picked up by Noon on Tuesday.

3. All bins delivered are placed in the public right-of-way and are available for everyone in the neighborhood regardless of who ordered the bin.

### Important:

- These bins are to be used for vegetation only – no plastic, rocks, concrete or household trash.
- A limited number of debris bins are available each week so please share the bin with your neighbors.

**Thank You For Your Efforts To Reduce Fire Hazards In Our Community!**